

# Turf Conversions Save Water, Save Money

## Comply with State Drought Regulations, Replace Turf with Less Thirsty Landscapes

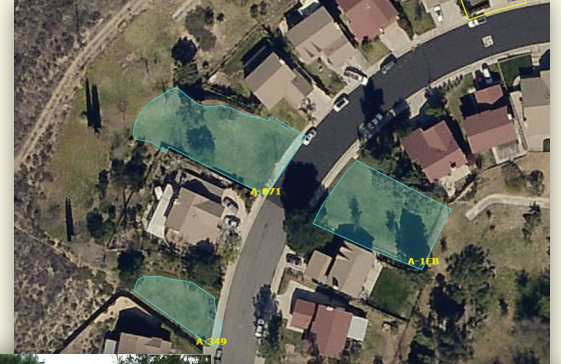
Stay Green's experts are saving customers money and helping them to comply with state-mandated reductions in water use by replacing ornamental turf with less water-intensive landscaping.

The results? Excellent returns on investment, and beautiful landscapes, too.

### SADDLETREE RANCH HOMEOWNERS ASSOCIATION

- 27,000 square feet of landscape renovated
- Eliminated common area ornamental turf
- Replaced turf with colorful, low-water-usage plantings
- Converted all irrigation to drip or precision low-flow nozzles
- New landscaping and irrigation enhances value of property
- 100 percent ROI due to turf replacement rebates
- Projected annual water savings approx. 30-50%

Saddletree Ranch Park Map



Rendering 1



Rendering 2

### Plant Palette

*Mulenbergia 'Regal Mist'*



*Purple Heart*



*Salvia 'Wendy's Wish'*



*Caryopteris 'Blue Sunshine'*



### Stay Green's Experts Say...

*"Typical water savings: We're seeing about 30 percent over the first year and up to 50 percent once the plants are mature. As the plants mature, they use less water."*

*"We do an ROI on all of these projects, and the ROI varies but 3 years is the typical target. However, with turf replacement rebates available in many jurisdictions, some projects are being reimbursed dollar-for-dollar — which means 100 percent ROI and all of their water savings are net savings."*

*Protect your property values, save water, save money and comply with the state's water conservation mandates. Call Stay Green today at (800) 858-5508 to find out how our turf conversion experts can maximize your investment!*



**Stay Green Inc.**  
*The Natural Choice  
For Professional Landscape Services*

Stay Green is fully bonded, insured, and licensed as: Landscape Contractor (C-27, C-61 License# 346620)  
Certified Arborist (WE-8703A) Pest Control Advisor (4181) Pest Control Operator (75085) Certified California Water Auditor